

SnapLogic API Management

Scale your API strategy

Companies with advanced API strategies are the ones thriving in the digital economy, but managing an API ecosystem is not easy. Organizations must connect internal and external systems to deliver seamless digital exchanges for internal stakeholders, partners, and, most importantly, customers. Unfortunately, traditional approaches to managing APIs are code and time-intensive, thus preventing you from leveraging APIs effectively. To succeed in the digital economy, organizations need an API management solution.

SnapLogic API Management

Organizations can accelerate digital transformation by exposing real-time connections and complex integrations as APIs. Effectively managed and properly secured APIs help improve collaboration between departments and spur innovation and growth by enabling building of products and services on top of APIs. SnapLogic API Management solution enables API developers/ administrators (admins) to create and manage APIs, define, control, manage traffic, and secure these APIs through policies all from a unified platform for application and data integration. They can also monitor and analyze API usage and performance, and manage the entire API lifecycle. It also enables API consumers with self-service to discover, test, and consume APIs seamlessly via a customizable developer portal.

SnapLogic APIM Quick Stats:

- 96% labor savings compared to hand-coding API security policies
- Customers in healthcare, financial services, events, software and retail
- Some customers manage +5000 APIs with SnapLogic APIM

API Creation

No more bottlenecks in API creation. Businesses are tired of waiting for the ability to connect databases, ERP systems, cloud apps, etc. Both technical and non-technical users can use SnapLogic's Intelligent Integration Platform (IIP) low-code technology to connect their apps and data by creating APIs (SnapLogic pipelines). Users can conveniently import these APIs directly into SnapLogic APIM to be managed & secured; without leaving the SnapLogic ecosystem. Thus, avoiding tool sprawl. Conversely, users can directly create API using an OpenAPI spec template within SnapLogic's APIM interface. Regardless of where the API was created, it can be managed with SnapLogic's APIM.

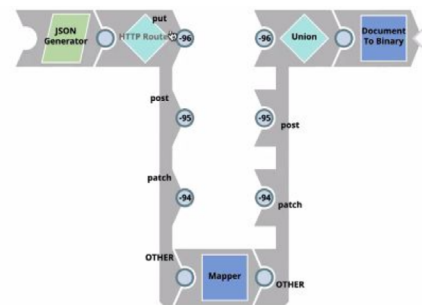


Figure 1: Low-Code/ No-Code SnapLogic Pipeline API created to map data

API Publication and Lifecycle Management

APIs created on the SnapLogic platform can then be tested and deployed onto the SnapLogic API gateway. You can also manage 3rd party APIs with the same gateway. With API Manager, you can manage the complete lifecycle of APIs. API admins can publish APIs based on factors such as maturity, security, and privacy. SnapLogic users have the option to apply a variety of API policies (individually or organization wide), ranging from security to traffic management (i.e. rate limiting). API developers can wrap similar APIs into an API project and define policies based on the associated SLAs.

Key Capabilities

- Publish and unpublish APIs
- Define and enforce policies for SnapLogic and 3rd party APIs such as:
 - Traffic Management: throttling and IP restriction
 - Security: CORS Restriction, Request Validator, Request size limit
 - Access Management: key and role-based, OAuth2
 - Request Transformations
- Hierarchy of API policies such as global policies, project specific policies, and version specific policies
- API versioning and retirement

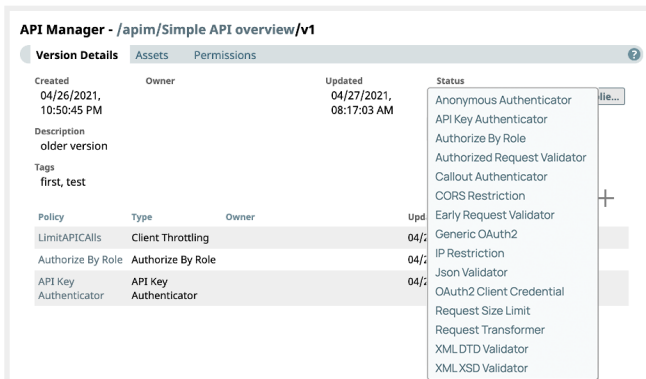


Figure 2: SnapLogic APIM Policy Management

Developer Portal

SnapLogic API Management provides a developer portal that enables internal and external users with self-service. With the developer portal, organizations can promote the reusability of work and create a collaborative environment. The developer portal makes API products scalable and reusable because API consumers are no longer dependent on the API admins for discovery and usage.

Key Capabilities

- Search and filter APIs
- Get documentation, subscribe to and test APIs
- View or download the API specification

API Dashboard and Monitoring

SnapLogic provides extensive capabilities in the API Dashboard to visualize API metrics and drill down into details. With API dashboards you can:

- Monitor API consumption (requests, top APIs)
- View API errors (request errors, response errors, error percentage)
- Get API performance (99th percentile latency) for any collection of APIs over a specified time period.
- Export data for additional analysis

API dashboard also provides a detailed view and capability to identify specific execution times when the latency was too high or when an API returned too many errors.

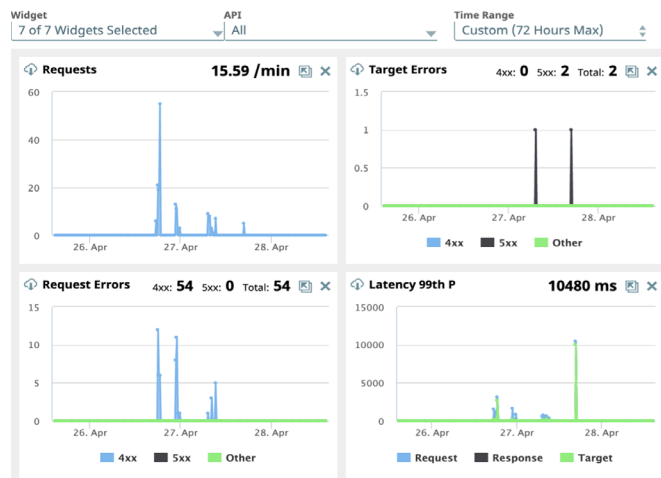


Figure 3: SnapLogic APIM Analytics Dashboard

Sign up for a custom demo today at snaplogic.com/request-demo

SnapLogic powers the automated enterprise. The company’s self-service, AI-powered integration platform helps organizations connect applications and data sources, automate common workflows and business processes, and deliver exceptional experiences for customers, partners, and employees. Thousands of enterprises around the world rely on the SnapLogic platform to integrate, automate, and transform their business. Learn more at snaplogic.com.