

# SnapLogic’s Platform for Generative Integration

Integrate, automate and orchestrate the flow of data across the enterprise

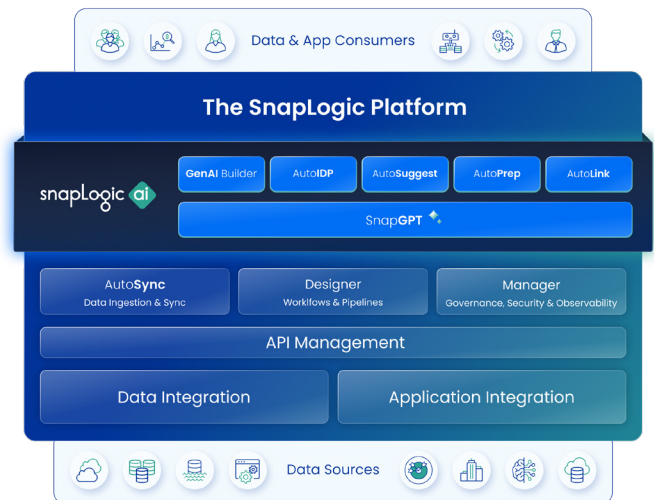
SnapLogic’s platform for Generative Integration uniquely combines application and data integration with GenAI application development. Our integration platform includes intuitive, natural language-based integration, integrated API management for a composable architecture, and the GenAI Builder, which allows the rapid creation of LLM-powered applications without requiring coding expertise or data scientists. As the leader in Generative Integration, SnapLogic helps enterprises empower everyone to accelerate digital transformation and integrate systems up to 100X faster.<sup>1</sup>

## Use Cases Supported by the SnapLogic Integration Platform

Unifying data and application integration, API management, and GenAI application development into a single platform, SnapLogic supports several use cases. Whether you seek to modernize your architecture for the age of AI, automate business processes, accelerate GenAI-powered transformation, migrate to the cloud, or consolidate or aggregate data for better visibility and insight, SnapLogic’s integration platform is your one-stop solution.

## Integration Platform Architecture

SnapLogic’s integration platform is purpose-built for next-generation application and data integration, API management, and GenAI application development requirements. Manage orchestrations, schedules, connections, and security details through the Designer, Manager, and Monitor modules. Stream data between applications and data sources through a Snapplex, a self-upgrading execution network that scales elastically based on data processing volumes.



“Of all our enterprise integration tools, I asked my team and our citizen developers, which vary from basic to experts, and when I challenged them all to propose a more user-friendly solution than SnapLogic, no one could.”

**Jamie Locks**, VP of Integration and App Development at Schneider Electric

1) Customers have reduced integration development time with SnapGPT from 14 hours to 1 hour

## SnapLogic AI

SnapLogic's family of AI capabilities harness the power of GenAI and machine learning (ML) to enable users to integrate and create new GenAI applications up to 100x faster.

- **AutoSuggest** provides contextual suggestions when accessing data, transforming data, or building integrations
- **SnapGPT**, the industry's first and most powerful GenAI-powered integration co-pilot, empowers everyone to create integrations in natural language while enforcing centralized controls
- **GenAI Builder** empowers everyone to create powerful LLM-powered applications without coding or relying on data scientists

## Data Integration

Move data to the cloud or between on-premises sources with visual ETL or ELT, use reverse ETL to send insights back to operational systems, and activate repeatable automations.

## Application Integration

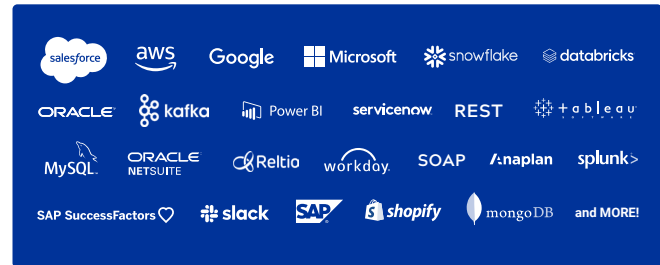
Leverage thousands of pre-built connectors (Snaps) and templates (Patterns) for common use cases to automate business processes at scale, without complexity.

"We chose SnapLogic because of its ease of use and ROI. The pre-built patterns made data transformations so easy and required little coding. We have reduced the time it takes to build an integration by 50%."

**Raylana Schwidde**, Integration Developer, Televerde

## API Management

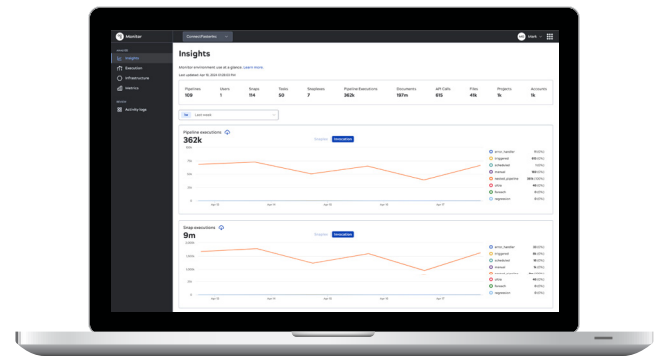
An easy-to-use, full-lifecycle API management solution to help you build an agile composable architecture.



## Snaplex Runtime

Stream data between applications and data sources through a Snaplex, a self-upgrading execution network that scales elastically based on data processing volumes. Benefits include:

- Provides elastic scalability
- Supports enterprise data security standards
- Automates critical business processes
- Does not store your data
- Facilitates real-time streaming speeds
- Enables integration runtime in the cloud and behind a firewall
- Can handle massive data volumes for the most demanding jobs



SnapLogic is the leader in generative integration. As a pioneer in AI-led integration, the SnapLogic Platform accelerates digital transformation across the enterprise and empowers everyone to integrate faster and easier. Whether automating business processes, democratizing data, or delivering digital products and services, SnapLogic enables you to simplify your technology stack and take your enterprise further. Thousands of enterprises around the globe rely on SnapLogic to integrate, automate and orchestrate the flow of data across their business. Join the generative integration movement at [snaplogic.com](https://snaplogic.com).