

SnapLogic AutoSync

The first step toward enterprise data orchestration

According to a study performed by Vanson Bourne, as many as 88% of organizations face challenges loading data into data warehouses due to legacy technology, complex data types, data silos, and data access issues tied to regulatory requirements.¹

FEATURES

- Easily start, stop, or delete integrations
- Detect schema drifts: column additions, changes, deletions
- Implement bulk data loading, incremental loading, or SCD2 loading to maintain data history
- Conveniently transform in-flight data: merge columns, mask or reformat data, etc.
- Automatically log and observe application-specific events
- Easily launch automatic data flows across popular cloud and on-premises data and application endpoints
- Manage AutoSync from the platform Monitor pane
- Enjoy predictable pricing with non-consumption, unlimited data flow capacity
- Create custom endpoints with the new software developer kit

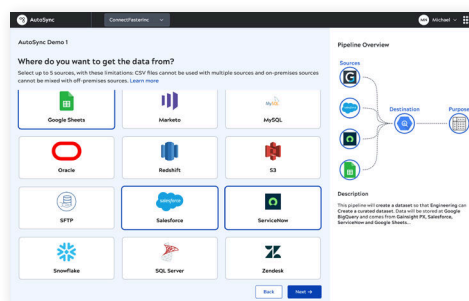
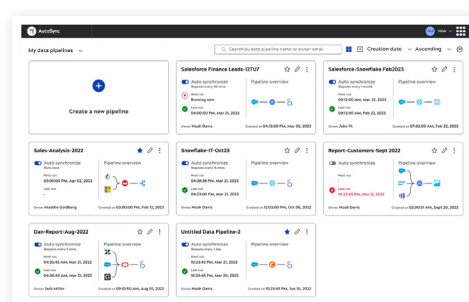
Take Data Integration Workloads off Your Plate

To the rescue is SnapLogic AutoSync, a powerful zero-code, zero-build data integration, syncing, and automation service that is purpose-built to be fast and easy for anyone to use.

AutoSync delivers a modern alternative that spares you the pains of developing code, managing changing schemas, and tuning data pipelines, enabling more reliable data flows with significantly less effort. Take the first step to automate and orchestrate the flow of data – end-to-end – across your enterprise with SnapLogic AutoSync.

Start Right – For Everyone

Uniquely featuring a user interface that starts right – literally from the right side of a typical data flow – begin by specifying the business purpose first. For example: create a data product, develop a forecast, build a dashboard, or migrate data from an on-premises database.



Next, inform AutoSync where the data for the business purpose will be stored. Point and click from among the data warehouses (cloud and on-premises) and analytics platforms supported, including Amazon Redshift, Google BigQuery, Microsoft SQL Server, Oracle, Snowflake, and others. As a bonus, AutoSync automatically documents your flow as you progress and create it.

Finally, instruct AutoSync to pull the information you need from among the supported data sources. You can specify up to five data sources for one flow: extract customer opportunity data from Salesforce; pull IT escalation requests from ServiceNow; or tap into product usage data from GainsightPX.

1) SnapLogic-Vanson Bourne, The State of Data Management: Why Data Warehouse Projects Fail, 2020

Implement Managed Self-Service

From here, AutoSync presents available configuration options and credentials from which to select (as established by a system administrator or a more technical user). When completed, AutoSync automatically creates the pipeline.

That's it! Set it and forget it!

Once a pipeline is triggered to run, AutoSync can provide status information via email. Except for additional system administration, logging into AutoSync is not required. For managed self-service environments, AutoSync integrations can be easily shared with others to perform their jobs, while central control and security is maintained.

One Platform

AutoSync is an available premium option within the SnapLogic Platform; one platform that does it all for integrations. As a result, you can pair AutoSync with any of our SnapLogic ELT (extract, load, transform) for Data Platforms Snap Packs to perform more advanced transformations on the mobilized data that can then be pushed down to your cloud data platform for execution.

Key Use Cases

Sales Analytics: Use AutoSync's slowly changing dimension capabilities to mobilize, track, and retain CRM opportunity historical data in your CDW that otherwise would be overwritten if kept in your CRM solution.

Customer 360: Quickly and automatically adopt a new schema in your CDW, without coding, when a new field appears from your AutoSync source application.

Data Activation: Create a reverse-ETL (extract, transform, load) process to push CDW-enriched data, such as customer-churn analysis, or process efficiency scoring back into the original data source, to assure familiar access to the enhanced data.

Data Services: Via the SnapLogic Designer UI, expose your pipeline as a URL to enable data services with APIs.

Benefits

- Data engineering teams get more done in less time and save costs
- Business analysts and data scientists onboard new data more quickly and easily, accelerating data analytics or AI modeling projects
- IT executives can empower teams across their organizations with better managed self-service integrations

Take pipeline workloads off your plate. Spend less time developing, managing, and maintaining data integrations and syncing pipelines. Spend more time creating products and delivering services that delight your customers and grow your business. Let SnapLogic AutoSync do the work. You take the credit.

Request a demo today! Visit www.snaplogic.com/request-demo

SnapLogic is the leader in generative integration. As a pioneer in AI-led integration, the SnapLogic Platform accelerates digital transformation across the enterprise and empowers everyone to integrate faster and easier. Whether automating business processes, democratizing data, or delivering digital products and services, SnapLogic enables you to simplify your technology stack and take your enterprise further. Thousands of enterprises around the globe rely on SnapLogic to integrate, automate and orchestrate the flow of data across their business. Join the generative integration movement at [snaplogic.com](https://www.snaplogic.com).